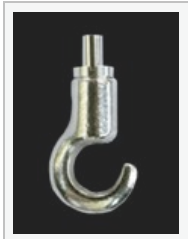
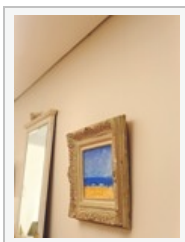
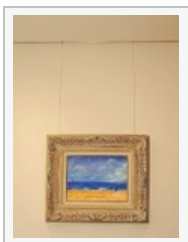
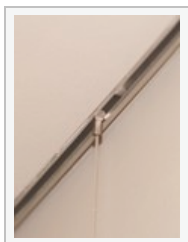


plaster rail ldcr ceiling mounted system



technical

parts & pricing

plaster rail ldcr - ceiling



Code	Length	\$
LDRC2	2.0m	\$36.00
LDRC3	3.0m	\$53.00

T hangers

T hangers are available in stainless steel cable and nylon. They can then be fitted anywhere along the track.



Stainless steel

Stainless Steel Cable

CODE	M	\$	Use hook
T-Bar 1.5m	1.5m	\$14.25	HL, LSSSH, SM
T-Bar 2.0m	2.0m	\$14.85	



Nylon

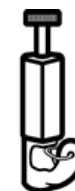
Stainless Steel Cable

CODE	M	\$	Use hook
T-Bar 1.5m	nylon 1.5m	\$12.85	MS
T-Bar 2.0m	nylon 2.0m	\$13.50	

adjustable hooks
Steel

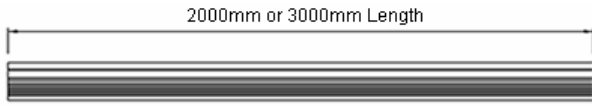


Code	Description	Price
HL	Self-Locking Hook Internal Clutch	\$11.85



Code	Description	Price
LSSSH	Super Security Hook Internal Clutch	\$12.95

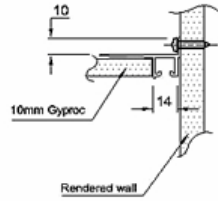
Side Profile



Bottom Profile



Track is hidden from view, creating a shadow line effect



- ▶ This extrusion is fitted to the perimeter of a space prior to the installation of the ceiling board. The extrusion butts to rendered walls.
- ▶ The extrusion is aluminium with strong weight capacity once set into existing joists
- ▶ The plasterboard is set over the rail with no protrusions. The rail comes in 2 and 3 meter lengths and is attached directly to ceiling joists or ferring channels in fixed or suspended ceilings
- ▶ T-anchor hangers can be inserted anywhere along the track.



[Download Brochure](#)

Nylon



Code	Description	Price
SM	Super Hook Max weight capacity of 25 kg	\$15.00

Code	Description	Price
MS	Multi Super Hook for Nylon	\$7.95